



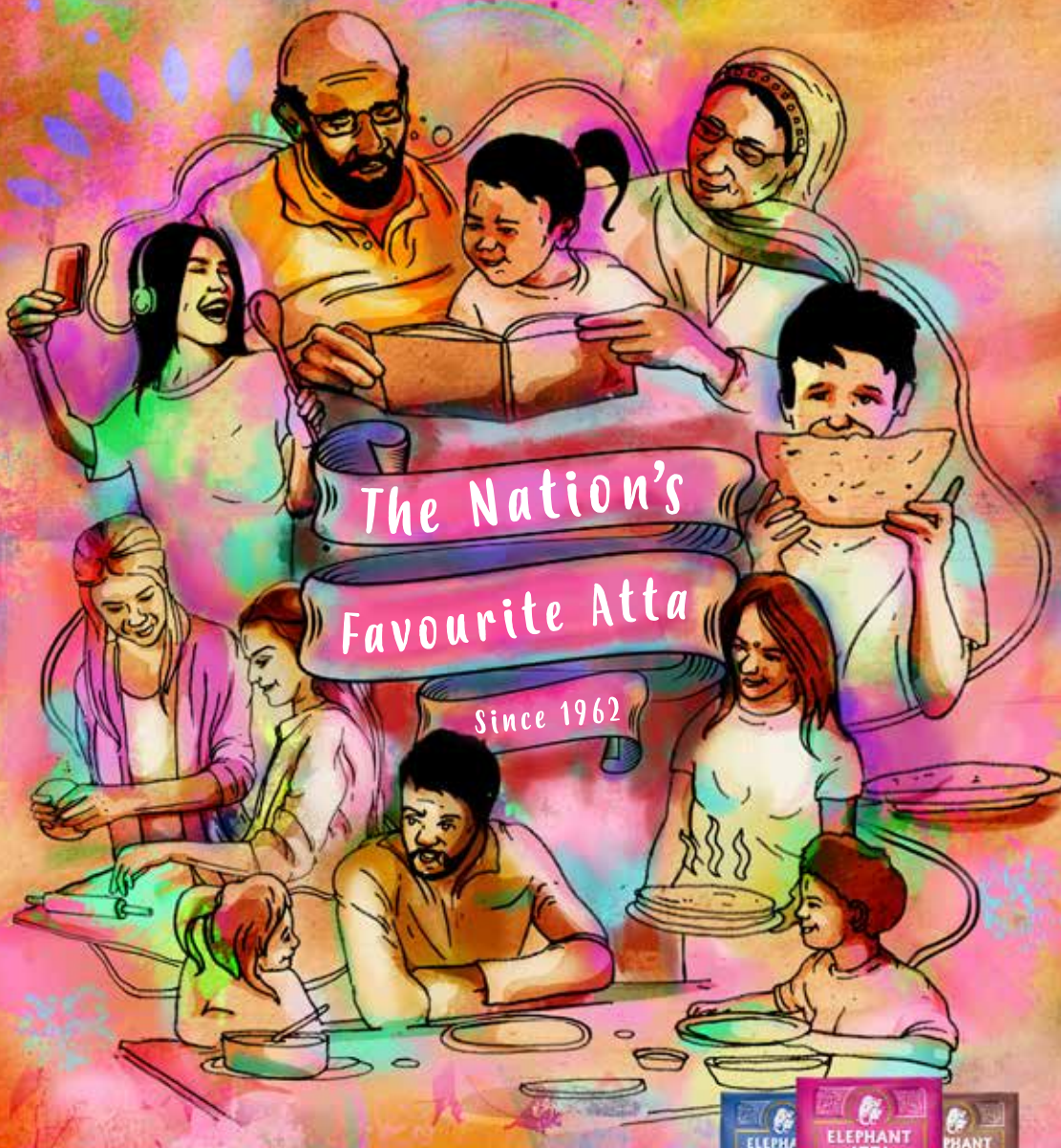
Diwali

LEICESTER 2019

#diwalileicester

Leicester
visitleicester.info

Elephant Atta and Inkquisitive WISH LEICESTER A HAPPY DIWALI



@elephantattaofficial @inkquisitive



Welcome

Welcome to Leicester – and to our famous Diwali celebrations!

Diwali celebrations in Leicester are some of the best in the UK and one of the biggest outside of India. Every year, the festival of lights brings the city's communities together and attracts thousands of visitors to the celebrations on the Golden Mile. This year will be no exception, with huge crowds expected to watch the switch on of the Diwali lights.

This is a street party like no other – over 35,000 people of all faiths attend the switch on of the lights on the Golden Mile, and even more come along on Diwali day itself to experience the buzzing street atmosphere, colourful fashion, gold jewellery shops and mouth-watering food on offer from some of the country's finest Indian restaurants. The Diwali Village caters for young and old of all communities, welcoming everyone to celebrate the Festival of Light in Leicester.

But it's not all about the Golden Mile. The Diwali lights radiate out across the city in the form of a cultural event programme – from theatre performances to craft activities, cultural talks and exhibitions – there are events for people of all ages and cultures to learn about and get involved with the celebratory spirit of the festival!

Contents

- Happy Diwali P4
- Diwali in Leicester P6 - 7
- Leicester's Diwali Celebrations P8 - 9
- What's On P11 - 22
- Map of Firework Display P24 - 25
- Welcome to Leicester P27
- Food P28 - 30
- Shopping P31 - 35
- Staying in the City P39 - 40
- Travel into Leicester P42 - 43
- Road Closures P44 - 45



For further information on Diwali in Leicester:

W: visitleicester.info
E: info@visitleicester.info
T: 0116 299 4444



Happy DIWALI



Leicester is one of the most culturally diverse cities in the country and it is with great pride that we host one of the largest Diwali events outside of India. As one of our most important and prestigious festivals it has grown from strength to strength as a main attraction in the festival calendar of the city.

Diwali is a time for people from many cultures to come together in a spirit of friendship and greater understanding. It also serves as a wonderful time of year for family and friends to celebrate and for those visiting Leicester to share in these celebrations, may we give you the warmest of welcomes on behalf of our city.

We would like to express our gratitude to all of those who work tirelessly to ensure that Diwali is such a success, particularly the Leicester Hindu Festival Council, along with Curve, the Diwali Advisory Panel, Young People's Council, local ward councillors and all of the city council departments involved.

It again gives us huge pleasure to join in these great celebrations and wish you all a very happy and peaceful Diwali.

Sir Peter Soulsby
City Mayor

Piara Singh Clair MBE
Deputy City Mayor



Find the space your family needs in Kibworth.

the place to be

When your family grows it's important to find a home with all the space you need. Our new developments at Centurion Place and Harcourt Grove put families first. The location is equally appealing, only ten miles from Leicester but in a stunning village setting. Kibworth has it all, for every member of the family.

Centurion Place, LE8 0UT

2 to 5 bedroom homes plus 2 bedroom bungalows from £249,000

Tel: 03301 628 407

Harcourt Grove, LE8 0HH

2 to 4 bedroom homes from £208,000, plus 1 bedroom apartments coming soon

Tel: 03301 627 335

From stunning homes to great offers and unbeatable customer service, we have everything to help you make your move. It's why our customers recommend us and it's what makes The Miller Difference.

Discover it for yourself by visiting either Harcourt Grove, open Thursday to Monday or Centurion Place, open daily from 10.30am to 5.30pm.

www.millerhomes.co.uk



millerhomes

Photography represents a typical Miller Homes interior. Price and availability correct at the time of going to print. Carpets and floor coverings are not included in our homes as standard.

Diwali IN LEICESTER

Leicester's celebration of Diwali is one of the biggest outside of India. Whether it's to enjoy dance, fireworks, food or fashion - come and celebrate Diwali with us!

The festival kicks off with our famous lights switch-on on **Sunday 13 October** and culminates with a glorious fireworks display and entertainment on Diwali Day **Sunday 27 October**. We also have a fantastic selection of events taking place around the city during the fortnight and we welcome you to join us in Leicester.

What is Diwali?

Diwali is an ancient festival celebrated by **Hindus, Sikhs** and **Jains** all over the world. It represents the universal messages of good over evil, of truth over falsehood and of light shining in the dark of the year. It is traditionally a time for exchanging gifts, friendship, peace, and goodwill to all.

For **Hindus**, Diwali represents the start of the New Year. It also marks the start of winter. Diwali honours **Lord Rama** and his wife **Sita** returning to their kingdom of Ayodhya, following Rama and **Hanuman's** victory over the demon King Ravana and rescue of Sita from his evil clutches.



Each day leading up to Diwali has a different meaning and these also vary between regions or communities.

The first day marks the start of Diwali. It is dedicated to the worship of the **Goddess Lakshmi** who provides prosperity.

On the second, there is a focus on abolishing evil and the **Goddess Kali** is worshipped.

On the third, Diwali day, clay lamps (called divas) and candles are lit in temples and houses, and fireworks are let off, giving Diwali its name of **Festival of Lights**. People also clean and decorate their homes with Rangoli (traditional colourful folk patterns), buy new clothes, and give each other gifts and sweets.

On the fourth, it is the start of the New Year (**Nutan Varsh**) and businesses traditionally open new accounts.

The fifth day is important to Hindus as it celebrates the relationship between brothers and sisters.

People seek blessings at Diwali from **Lakshmi**, the goddess of wealth and prosperity, and Lord Ganesha, the remover of obstacles.

For **Sikhs**, Diwali celebrates the release of the sixth guru, **Guru Hargobind Ji**, and 52 Hindu Rajas (kings) from imprisonment. Guru Hargobind Ji was held for 40 days at the Gwalior Fortress along with the Rajas, who had been deprived of their kingdoms and were badly treated. When the time came for the Guru's release, he refused to leave unless the Rajas were also set free.

The condition imposed on him was that only those Rajas that could hold onto the Guru's robe would be set free. Guru Hargobind Ji had a special robe made with 52 khalia (tapers) so that each of



the Rajas could walk free with him. He was then given the name '**Bandhi Chhor**', the deliverer of prisoners.

In India, Sikhs celebrate by lighting candles and divas (clay lamps) in houses and on the Sarowar - the sacred water which surrounds the Golden Temple, Amritsar. Sikhs in Leicester celebrate in Gurdwaras (temples).

For **Jains**, followers of one of India's most ancient religions, Diwali marks the anniversary of the attainment of **Moksha**, the final liberation of the soul from the cycle of death and rebirth, by **Lord Mahavir**. On this day, Jains celebrate this permanent happiness of the soul and remember Lord Mahavir's last sermon, which was given on Diwali day, before his soul left his body and was liberated.

Happy Diwali

THE KUBE IS THE PERFECT VENUE TO HOLD WEDDINGS AND EVENTS WITH SPACE FOR UP TO 1000 GUESTS! (SEATED FOR 750)

The Kube is a blank canvas and can be tailored to each client's needs.

Contact Joe for more information - weddings@leicester-racecourse.com - 0116 271 6515
CONFERENCES • EVENTS • WEDDINGS • RACEDAYS • EXHIBITIONS • LANDHIRE



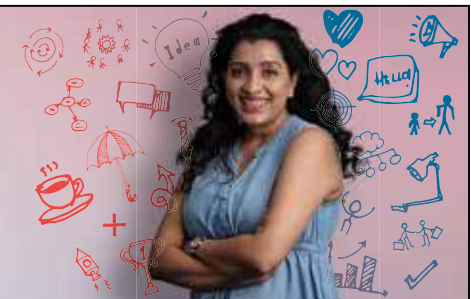
HastingsDIRECT

We're hiring!

We are looking for passionate and customer focused people to join us in our Leicester city centre office.

Clearly Hastings Direct

Find out more at: hastingsdirectcareers.com



Leicester's

DIWALI CELEBRATIONS

Diwali Lights Switch On

Sunday 13 October 3pm – 9pm

Belgrave Road main stage from 5.30pm
Cossington Street Recreation Ground stage programme from 3pm

Diwali Day

Sunday 27 October 3pm – 9pm

Cossington Street Recreation Ground stage programme from 6pm

This year, Leicester's world famous Diwali celebrations promise to be more spectacular and dazzling than ever, with the return of the Diwali Village on Cossington Street Recreation Ground and an aerial firework display above Belgrave Road.

Everyone will be welcomed to join in the festivities which will begin with the illumination of the Diwali lights along Belgrave Road, on Leicester's 'Golden Mile', on Sunday 13 October. Up to 40,000 people will watch the lights switch on, which follows a vibrant programme of music and dance on the Belgrave Road stage presented by the Leicester Hindu Festival



Council, Leicester City Council and supported by Curve. The stage programme for Diwali Switch On will run 5.30pm - 8pm on Belgrave Road with the lights turned on at 7.30pm followed by the fireworks, which this year can be viewed from Belgrave Road. The Golden Mile will be bathed in light throughout the festive period until Diwali Day, when the celebrations continue with the stage on Cossington Street Recreation Ground.

The Diwali Village on Cossington Street Recreation Ground will feature a full stage programme showcasing local talent, children's fun-fair rides and stalls including food and concessions running from 3pm to 9pm.

On Diwali Day, the Diwali Village will again be on Cossington Street Recreation ground along with a full stage programme of entertainment, presented by the Leicester Hindu Festival Council.

Fireworks have always been a traditional part of Diwali celebrations and on Diwali Day the fireworks can be viewed from Belgrave Road and the surrounding area. Leicester's Diwali display is created and choreographed by local company Bright Spark Fireworks Ltd who have embraced traditional elements mixed with the latest computer designed pyrotechnics and fireworks. Watch aerial fireworks exploding hundreds of feet above, combined with pyrotechnics at different heights forming



layers of spectacular colour and sound which highlights the tradition of light and colour during this wonderful festival.

This year Leicester's Wheel of Light returns. The big wheel will be located on Belgrave Road from Friday 11 October - Sunday 10 November.





George's

HAIRDRESSING

Inspiring the ladies and gents of Leicestershire for 45 years.
Find us on Allandale Rd,
Granby St & in Oadby.

0116 285 8282
www.georgeshairdressing.com



#LondonRdHair

From gin & prosecco in our Honesty Bar to lounging in our #BeSocial area... a new salon experience awaits at 157 London Rd, LE2 1EG.

0116 285 1699
www.londonrdhair.co.uk

George's HAIRDRESSING #LondonRdHair

As a Diwali treat, you can get 50% off a cut & colour!

Simply bring this voucher to your preferred salon

Offer valid for bookings in October & November 2019. Selected stylists only. A skin test is required 48hrs prior to your colour appointment. The offer can not be used in conjunction with any other offer. George's Hairdressing/London Rd Hair have the right to amend these terms and conditions at any time.

Happy Diwali

THE KUBE IS THE PERFECT VENUE TO HOLD WEDDINGS & EVENTS WITH SPACE FOR UP TO 1000 GUESTS! (seated for 750)

The Kube is a blank canvas and can be tailored to each client's needs.

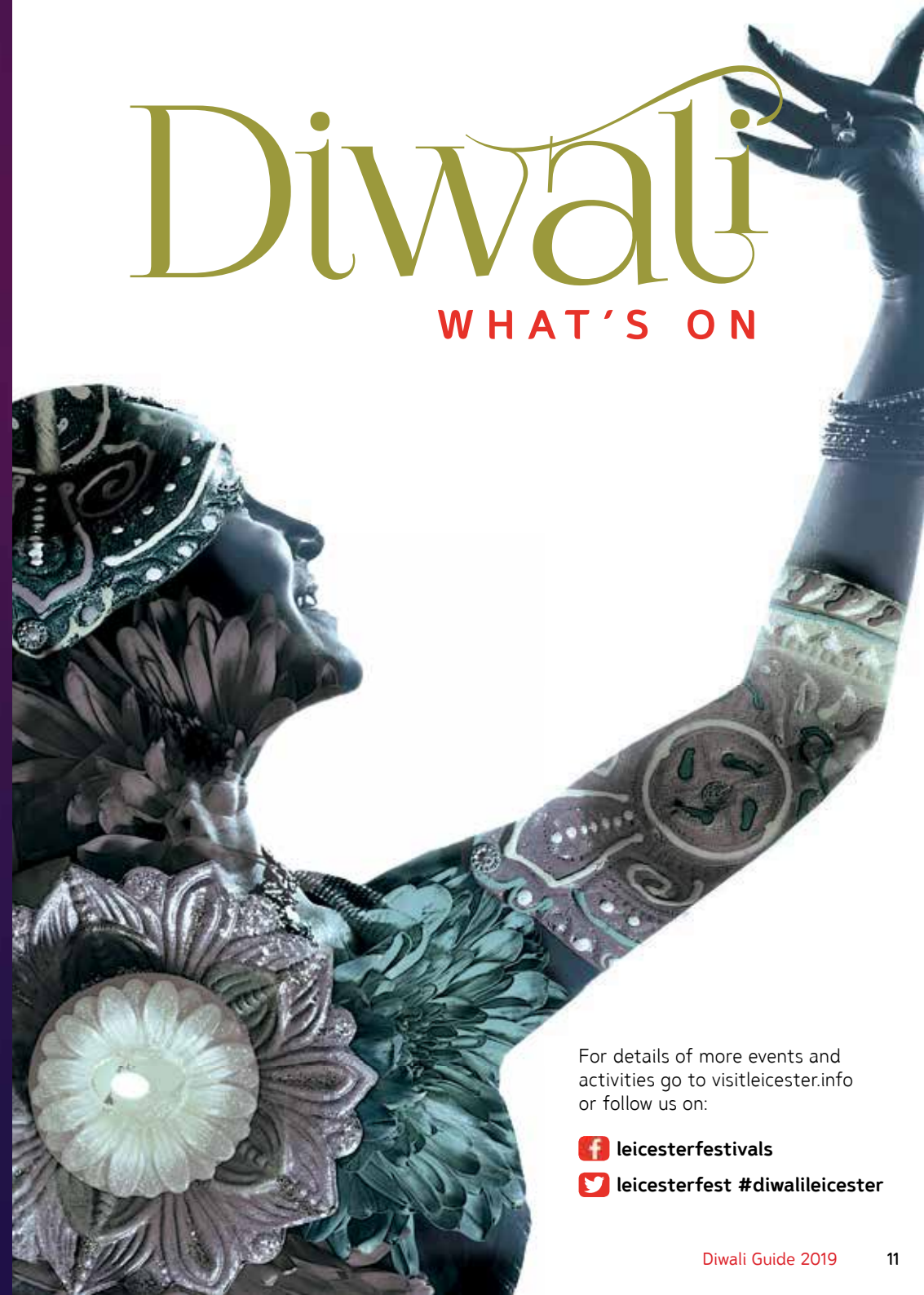


Contact Joe for more information

E: WEDDINGS@LEICESTER-RACECOURSE.COM T: 0116 271 6515
CONFERENCES • EVENTS • WEDDINGS • RACEDAYS • EXHIBITIONS • LANDHIRE

Diwali

WHAT'S ON



For details of more events and activities go to visitleicester.info or follow us on:

 [leicesterfestivals](https://www.facebook.com/leicesterfestivals)
 [leicesterfest](https://twitter.com/leicesterfest) #diwalileicester

Wheel of Light

Friday 11 October – Sunday 10 November
Belgrave Road

W: visitleicester.info

After last year's success the 110-foot Ferris wheel is returning to this year's Diwali celebrations. Leicester's Wheel of Light arrives at Belgrave Road through to the end of Diwali. The wheel will be lit at night to provide a glittering centrepiece to the festivities. Opening times and ticket prices are available at visitleicester.info



Rangoli Exhibition


Sunday 13, Monday 14 & Sunday 27 October
4pm – 8.30pm

Belgrave Neighbourhood Centre

Leicester Belgrave Mela in partnership with Tilda and Belgrave Neighbourhood Centre bring you the annual Diwali Rangoli exhibitions - a mixture of breathtakingly modern and traditional Rangoli styles. Be inspired by this once forgotten folk art and see how artists transform it into a visually stunning exhibition. Free drop in event. Suitable for all ages.



9 – 31 DEC



CURVE, ROSE THEATRE KINGSTON & SIMON FRIEND PRESENT
In association with Hachette Children's Group and Coolabi Group

GIRAFFES CAN'T DANCE

LIVE ON STAGE

Director
JULIA THOMAS


Composer
TASHA TAYLOR JOHNSON

Based on the bestselling book by
GILES ANDREA & GUY PARKER-REES


ROSE THEATRE KINGSTON

TICKETS 0116 242 3595
WWW.CURVEONLINE.CO.UK

CURVE THEATRE, LEICESTER



Supported using public funding by
ARTS COUNCIL ENGLAND



Leicester City Council

Curve is run by Leicester Theatre Trust Limited, a registered charity (no. 230708). We gratefully acknowledge and welcome the continued support of and partnership with the above organisations.

Diwali LIGHTS SWITCH ON

Sunday 13 October

Diwali Lights Switch On 5.30pm – 9pm
Main stage 5.30pm – 8pm
Belgrave Road

Diwali Village 3pm – 9pm
Stage 3pm – 8.30pm
Cossington Street Recreation Ground

Celebrate Diwali Leicester with the illumination of the Diwali lights along Belgrave Road featuring a traditional music and dance programme on the main stage, Diwali Village, annual Mela Rangoli exhibition and firework finale. The highlight of the main stage will relive colourful highlights from Curve's recent community production 'Bollywood Jane'.

Visit the famous Diwali Village in Cossington Street Recreation Ground packed to the brim with fashion, jewellery, arts, crafts, henna and community information as well as children's funfair, freebies and giveaways. Plus don't miss the huge variety of tantalising traditional Indian snacks, delicious curries and drinks from across the Indian subcontinent.

To give light and warmth to everyone that comes to the park a large moon shaped fire installation 'The Fireball' will be installed. At three metres tall, a hundred individual giant candles will be lighted at twilight and burn bright for the duration of the event.

Watch as the lights of Diwali come to life in the hands of a trio of fire performers, Helter Skelter Arts, with a spectacular fire show. The Diwali community stage will dazzle you with dances and music to get you in the party mood. Artists from across the region showcase their talents along with performances from local schools, dance academies and performing art groups. You can also take part in a Bollywood-jazz class with Shiamak Midlands & Aakash Odedra Company at Desi Masti Studio.

Take a ride on Leicester's Wheel of Light, lighting up the streets at night with its 110-foot illuminous Ferris wheel providing a birds-eye view of the spectacular lights along Belgrave Road. And finally the Diwali Lights Switch On would not be the same without the spectacular aerial firework display which can be seen above Leicester's Golden Mile and the surrounding area.

Highlights

Giant Puppet Parade

5.30pm – 6.30pm

Presented by An Indian Summer: Hanuman and Ravana roam Belgrave Road in a battle over good and evil - take a picture with the Giant Puppets as the story of the Ramayana is brought to life.



Helter Skelter Arts

6.30pm & 8.30pm

Featuring impressive props, sparkly fire and special effects, combining movement, music and flames in a high energy show.



Curve presents highlights from 'Bollywood Jane'

6.55pm

Relive colourful highlights from Curve's recent community production 'Bollywood Jane'. Inspired by the classic film Dilwale Dulhania Le Jayenge, this set features Bollywood dance sequences brought vividly to life by Kathak and contemporary dancer Kesha Raithatha.



Navin Kundra

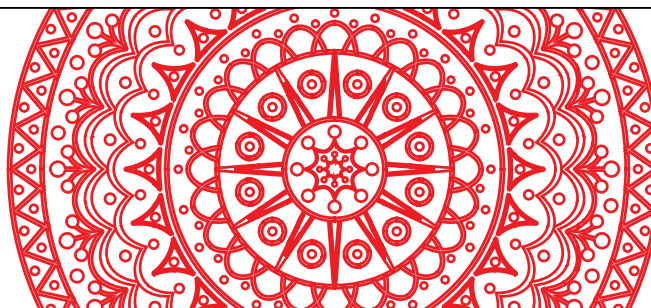
7.45pm

Award-winning artist, Navin's music combines Eastern and Western influences spreading the light of love and happiness through his music this Diwali.



 **Pinnacle**
Chartered Certified Accountants & Registered Auditors
trusted • caring • professional

32 De Montfort Street, Leicester LE1 7GD. Tel: 0116 254 4316
Dedicated to delivering a first class client service.



To all our customers, wishing you all a very

Happy  Diwali

E: info@pinnacleaccountants.co.uk W: www.pinnacleaccountants.co.uk

Diwali activities: Highcross Pop-Up Shop

Tuesday 15 – Friday 18 October
10am – 3pm
Highcross

W: highcrossleicester.com

Join Leicester Arts, Museums & Festivals for a range of Diwali themed activities, painting divas, making masks of Rama, Sita, Hanuman and Ravan from the Diwali story and dressing up.

6,000 Lights: The Story of Diwali in Leicester

Tuesday 15 – Friday 18 October
10am – 3pm
Highcross

W: highcrossleicester.com

Leicester has what is regarded as one of the largest Diwali celebrations outside of India, but the festival had very humble origins back in the 1960's. The exhibition explores why Leicester has this spectacular festival and the people, organisations and events that have made it happen. Local people have shared their memories and photographs to create a unique record of how Leicester's Festival of Lights has been celebrated through the decades.



Diwali Family Art Workshops

Monday 14 – Friday 18 October
1pm – 3pm & 3.30pm – 5.30pm
Belgrave Neighbourhood Centre
W: canalrivertrust.org.uk

W: leicester-mela.co.uk

Leicester Belgrave Mela in partnership with Canal and River Trust and Belgrave Neighbourhood Centre will be delivering 'create' participatory family workshops this half term. Create traditional Rangoli patterns, floating diva's & boats and lantern making. Get creative and have fun this half term! Free family drop in – 40-minute sessions. Suitable for ages 5+. These can then be taken home or sailed on the canal at our light festival on Friday 18 October by Lime Kiln Lock.



Diwali Storytelling

Wednesday 16 October
4.30pm – 5.30pm
Belgrave Library

W: leicester.gov.uk/libraries

Visit Belgrave Library and be transported by words and your imagination in to a world of light and celebration through Diwali stories shared together.

Diwali Storytelling and Crafts

Thursday 17 October
2pm – 3.30pm
Rushey Mead Library

W: leicester.gov.uk/libraries

Visit Rushey Mead Library for an afternoon of storytelling and crafts inspired by the Diwali Festival.

Column of Light

Friday 18 October
6pm – 9.30pm
Limekiln Lock, off Abbey Park Road LE1 3WA

W: canalrivertrust.org.uk

Artist Patrick Murphy will be unveiling 'Canal Column of Light' a laser installation at Limekiln Lock which will fire a neon colour beam of light along the canal and into the night sky. The light will be visible in the night sky for up to 5-7 miles away and provide a great addition to the night's fantastic artistic offerings. On the evening of Friday 18 October there will also be chance to sail and float all the fantastic art pieces made at Belgrave Neighbourhood Centre and an opportunity to see our illuminated canal boats on water.

Diwali Mela Bazaar

Saturday 19 October
10am – 5pm
Humberstone Gate & Clock Tower

W: leicester-mela.co.uk

Leicester City Council with support from Leicester Belgrave Mela brings a flavour of Diwali celebrations to the city centre. Experience a feast of Indian shopping, arts and crafts, tantalising Indian cuisine and live entertainment. There's something for all the family at this cultural festival so don't miss out.



Across the globe, the Kumon **Maths and English** Programmes advance students beyond their school level.

Leicester Beaumont Leys 01509 414866
Leicester Belgrave 01162 667645
Leicester Birstall 01162 609745
Leicester Central 01162 668037

Leicester Evington 03335 777441
Leicester Forest East 01162 124711
Leicester Glenfield 01162 762033
Leicester Oadby 01162 720371

Contact your local Instructor for a free assessment.

Leicester Rushey Mead 01162 766648
Leicester Stonegate 01162 219538
Leicester Syston 01164 422348
Leicester Wigston 01162 720371

Fees vary. Please refer to your local study centre.

A WORLD-CLASS
EDUCATION
FOR YOUR CHILD



kumon.co.uk

KUMON

Curve Diwali Family Day in partnership with An Indian Summer

Saturday 19 October
11am – 3pm
Curve Theatre
W: curveonline.co.uk/get-involved/family-days/

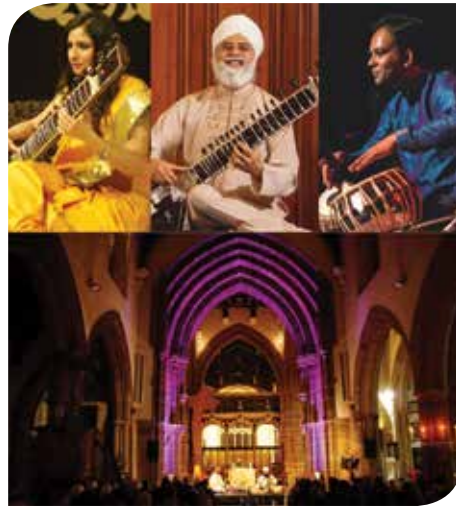
Throughout the day, enjoy free building tours and workshops, foyer stage performances curated by House of Verse, dressing up and crafts, storytelling and Diwali related activity, including mehndi hand decorating, rangoli art and an exhibition of traditional Indian dance and costume. Or bring your little ones to see a magical take on the Ramayana with puppets as part of our Little Curve programme. All activity is free, although some must be booked in advance.



Music & Light: An Evening of Indian Classical Music

Saturday 19 October
Doors open: 6.30pm / Concert: 7pm – 8pm
Leicester Cathedral
Tickets: £10 / £8

W: leicestercathedral.org
Presented by Sitar Music Society in partnership with Leicester Cathedral. Celebrate Diwali the classical way with a special evening exploring divine light through music. Enjoy the moods and melodies of Indian classical music in the stunning setting of Leicester Cathedral. The concert will feature exceptional artists Ustad Dharambir Singh MBE (Sitar), Roopa Panesar (Sitar) and Shahbaz Hussain (Tabla).



Wishing you a **Happy Diwali** from Gateway Sixth Form College.

OPEN DAY Saturday 2nd November, 10am – 1pm
OPEN EVENING Tuesday 3rd December, 5pm – 7pm

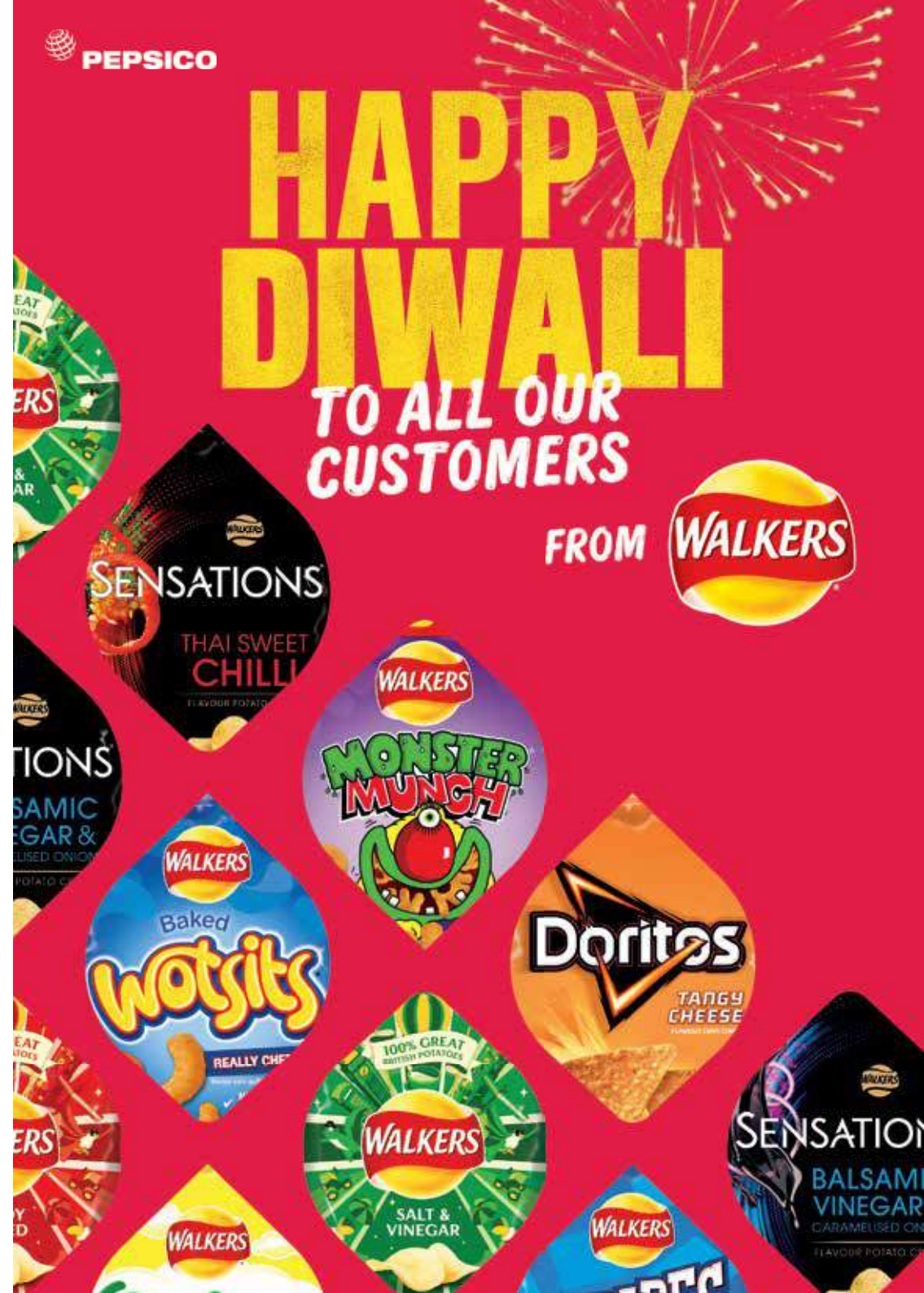
    www.gateway.ac.uk | 0116 274 4500



**HAPPY
DIWALI**

**TO ALL OUR
CUSTOMERS**

FROM **WALKERS**





BARRATT
DEVELOPMENTS PLC



DEVELOP YOUR CAREER AT BARRATT DEVELOPMENTS

There is more to being the UK's leading housebuilder than bricks and mortar. We couldn't do what we do without the wide range of departments we have.

We have jobs in finance, engineering or architectural design, IT, customer service, buying and construction, depending on your skills.

Our Sales department offers a variety of roles, which help individuals to buy their dream home. So, whether you would prefer to be selling our homes on site or talking to solicitors and clients to get contracts exchanged, there really is something for everybody. We cover everything from advertising new homes to moving our clients in.

Visit www.barrattcareers.co.uk for more information



BARRATT
DEVELOPMENTS PLC



building futures together™

Yuva Nartan Utsav

Saturday 19 October

7pm - 9.30pm

Tickets: £12

Ticket Office: 0116 242 3595

W: curveonline.co.uk / W: nupurarts.org.uk

Curve Theatre

An exhilarating evening of vibrant Indian Classical dance and music presented as part of Curve's nationally recognised 'New Work Festival' 2019. Delve into the mesmerising grace, fluidity and intricacy of Odissi, Kathak, Kuchipudi, Mohiniattam and Bharatanatyam.

Voice of Legends 2

Saturday 19 October

De Montfort Hall

Tickets: £36.50 £26.50 £21.50

W: demontforthall.co.uk

An epic new music concert, conceptualised and performed by award winning singer and entertainer, Navin Kundra. Aimed at Bollywood music lovers and perfectly timed for Diwali, this concert is a riveting extravaganza of music, dance, and magical memories created for you by Navin in his unique style.



Diwali Fair

Sunday 20 October

12noon - 5pm

Peepul Enterprise

Enjoy a fun day with the whole family at the Diwali Fair featuring food, gifts, cultural performances, art, music and dance.

Poshak Puralekh Project: Cultivating Culture through Dance

Various events

W: cicd.org.uk

Poshak Puralekh is a celebration of Indian dance costume, having researched around 150 costumes amassed since Leicester's Centre for Indian Classical Dance was formed in 1981. Discover the history and magic of Indian culture through dance, mehndi, storytelling, Rangoli art, fashion shows and workshops.

Find out more at one of the exciting events at:

- **Abbey Pumping Station**
Monday 14 October 11am - 3pm
- **New Walk Museum**
Tuesday 15 October 11am - 3pm
- **The Guildhall**
Wednesday 16 October 11am - 3pm
- **Diwali Family Day at Curve**
Saturday 19 October 11am - 4pm
- **Diwali Fair Peepul Enterprise**
Sunday 20 October 11am - 4pm
- **Diwali Day**
Sunday 27 October



Diwali Greetings!

Join us at our next Fostering information event on 22 October.
www.leicester.gov.uk/fostering
0116 454 4500



Diwali Day

Sunday 27 October
 3pm – 9pm, stage programme from 6pm
 Cossington Street Recreation Ground
W: visitleicester.info
 The Golden Mile will be bathed in light throughout the festive period until

Diwali Day, when the celebrations continue at Cossington Street Recreation Ground with entertainment, children's funfair, food and craft stalls. There will also be an aerial firework display over Belgrave Road and the surrounding area.



Your **free** NHS Health Check is the perfect way to make sure that you are in good health, think of it like an MOT for your body – designed to keep you ticking over for longer.



How do I get a Health Check?
 If you are aged between 40-74 without an existing condition, you can expect an invitation from your GP offering you a free NHS Health Check. The NHS Health Check should be done every 5 years to keep you in the best health possible.

What is a Health Check?
 The NHS Health Check works out your risk for stroke, kidney disease, heart disease, type 2 diabetes or dementia. Once you have these results your GP practice will go through them with you and, through healthy lifestyle tweaks, you can reduce your risk and live a healthier life, for longer.

How can I reduce my risk of these conditions?
 Once you've had your NHS Health Check, your practice will go through your results with you. You'll be given advice to help you lower your risk of a stroke, kidney disease, heart disease, diabetes or dementia, and maintain or improve your health. But you don't have to wait until then to make healthy changes: increasing your activity levels, eating more fruit and veg, giving up smoking and losing weight, if you need to, are all great ways of reducing your risk and improving your health.

Why do I need a Health Check?
 As you get older, you naturally have a higher risk of developing one of these conditions, all of which can negatively impact on your quality of life; this is why we offer the NHS Health Check to adults (aged 40-74) free of charge at your GP surgery.

Recommended Viewing Sites for Diwali Aerial Firework Display

-  The **green zones** show the best places to watch the Diwali firework displays
-  The **red zones** will not provide a good view

Diwali Lights Switch On

Sunday 13 October, 5.30pm to 9pm

Diwali Fireworks display starts approx. 7.30pm Village closes at 9.00pm

Diwali Day

Sunday 27 October, 6pm to 8.30pm

Fireworks display starts approx. 8.10pm
Diwali Village closes at 9.00pm

Please note that times are approximate and Leicester City Council reserves the right to cancel fireworks display due to adverse weather conditions or safety reasons.



Samworth Brothers

QUALITY FOODS



HAPPY
DIWALI



Samworth Brothers
wishes everyone peace,
prosperity and a happy
Diwali

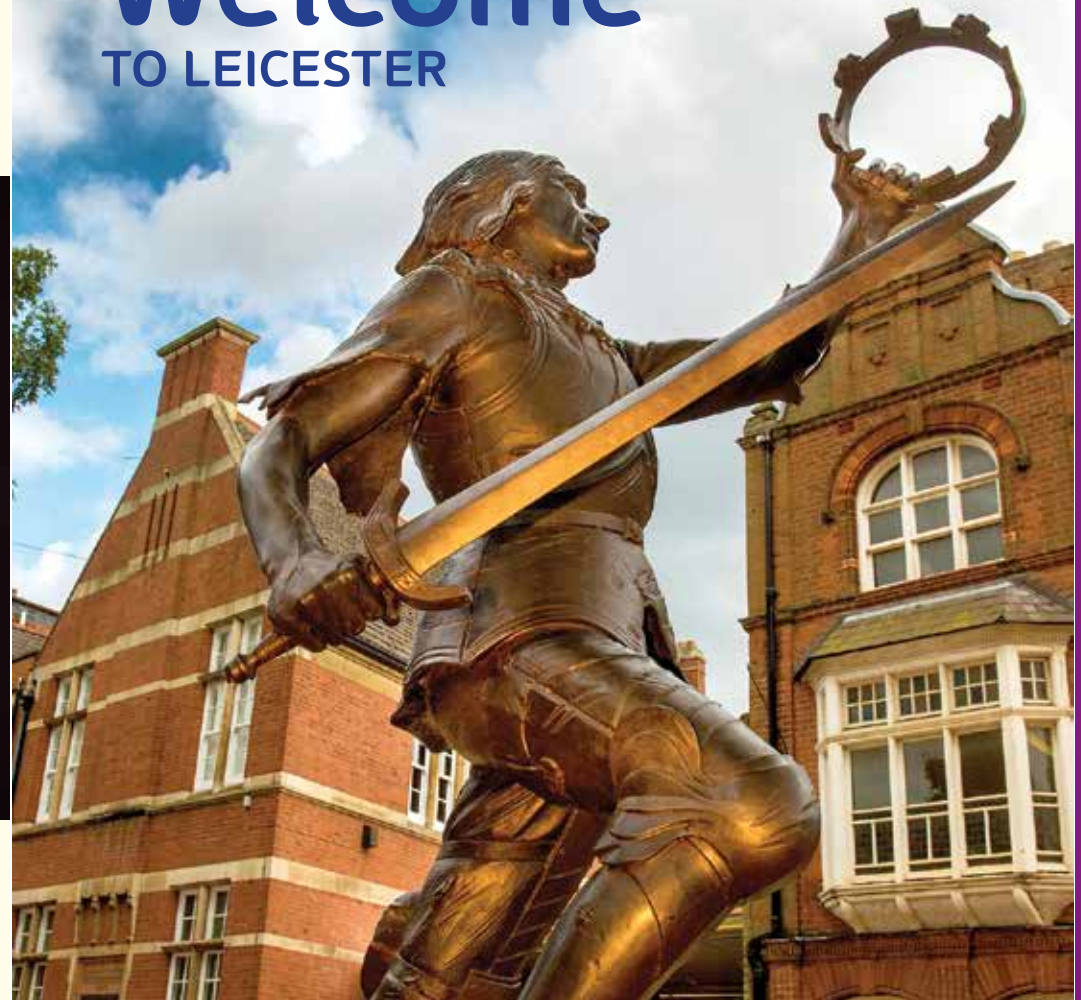
Samworth Brothers makes quality food enjoyed by millions of people across the UK every day.

We are a successful family business with great people and fantastic facilities. We invest for the long-term and strive to continually improve everything we do, to continue our success for our customers, our people and our communities.

Our Leicestershire businesses include Bradgate Bakery, Brooksby Foods, Dickinson & Morris, Kettleby Foods, Melton Foods, Saladworks, Walker & Son, Walkers Deli & Sausage Co and Samworth Brothers Supply Chain.

www.samworthbrothers.co.uk

Welcome
TO LEICESTER



Welcome to Leicester

WYVERN
RESTAURANT &
SPORTS BAR

Kerrysdale Avenue, Rushey Mead
Leicester LE4 7GJ
Tel: 0116 3191380 Mob: 07377 177773



Come and try our traditional veg/
non-veg Indian dishes.

- Chef specialities in a friendly and relaxed atmosphere
- Private parties bookings for up to 20 diners
- Takeaways available

OPEN 6 DAYS A WEEK

[f wyvernrestaurantandsportsbar](https://www.facebook.com/wyvernrestaurantandsportsbar)
[i #wyvernrestaurantbar](https://www.instagram.com/wyvernrestaurantbar)

Food AT DIWALI

As a former Curry Capital of Britain winner, Leicester is justifiably famous for its mouth-watering curries. It is home to a range of Asian cuisine, from traditional thalis to Indo-Chinese, fine dining Indian-fusion and Kerala seafood specials.

From Belgrave Road, the city centre, London Road, Narborough Road and beyond, Leicester has an amazing variety of restaurants to choose from. So why not combine your visit with a meal out to savour the city's offerings?

If it's a taste of Diwali you're after then the one thing that captures Indian traditions and their culinary essence is Indian sweets - known as mithai.

Synonymous with the festive period, a variety of different colours and flavours of mithai are consumed - sometimes on its own, or with tea or as part of a meal alongside savoury items. Mithai and other traditional Diwali snacks such as Bombay mix, sakkarpara and puri are an important part of celebrating the festival, not only as part of the feasting but also as a social activity.

The Golden Mile is the perfect place to stock up on these festive treats so whether you are looking for a feast for your Diwali get together, want to add some flavour to your celebrations or just want to sample some traditional food then Leicester is the place to be.



A listing of world cuisine on offer in Leicester is available on our website: vistitleicester.info

Wishing You A **Diwali**
Filled With Joy And Happiness
Sweets & Savoury Hampers Perfect Diwali Gift!

Bobby's Like us on Pure Vegetarian Restaurant & Takeaway

154-156 Belgrave Road, Leicester LE4 5AT
T: 0116 2660106
E: dharmesh@eatatbobbys.com • www.eatatbobbys.com

Apna Punjab Sweet Centre
— Diwali Greetings —
Specialist in Pure Punjabi (Indian) Food & Indian Sweets

We also cater for all types of functions:
• Birthdays • Weddings • General Parties
• Waitress Service • Crockery for hire
• Mithai and fruit baskets

65A Purley Road (off Catherine Street) Leicester LE4 6PB
T: 0116 266 6567
M: 07404 606838
E: modhanilesh@hotmail.com
W: apnapunjabsweets.com

Jaanu Happy Diwali PROSPEROUS NEW YEAR
CAFÉ & RESTAURANT

We offer a wide range of Indian food in a friendly atmosphere for all to enjoy.

Open Mon/Thurs 5pm - 11pm
Fri/Sat till midnight

JAANU Cafe & Restaurant - Indian food
189 Fosse Way (A46 Southbound)
Thrusington, Leics LE7 4TF. Tel: 01664 424323
Mob: 07580 424323 Web: jaanucafe&restaurant

- Private parties welcome
- Seating for up to 120 people
- Live barbecues
- Free large car park
- Outdoor catering available for special occasions

Happy Diwali **DOSA NIGHT** EVERY WEDNESDAY
New & Extended Menu
Every Thursday 3 course meal for £9.95

Peepul Restaurant
Call us: 0116 261 6000/6040
Orchardson Avenue, Leicester LE4 6DP
www.peepulenterprise.com

10% OFF (À LA CARTE MENU)
EXCLUDES SATURDAYS & ANY OTHER OFFERS
WITH THIS VOUCHER
Valid till 31st March 2020
* Terms and conditions apply.



Changing the culinary face of Leicester.

TANDEM

This Diwali, enjoy a multi-sensory experience in Leicester's most anticipated Indian restaurant. Tandem is brought to Leicester by renowned celebrity chef, Cyrus Todiwala, and offers a feast of unique dishes alongside exquisite décor.

Cyrus was first inspired to become a chef by his mother's unforgettable cooking, which has now led to over 42 years of working with food, from India to Australia and the UK, and running four restaurants in London. Today, Cyrus is known for his refined, elegantly spiced and sophisticated cooking and has had many achievements, including transforming Café Spice Namaste restaurant into a world-renowned culinary institution. Now, he's bringing his expertise to Leicester.

This Autumn, Tandem is welcoming Leicester to join them in being the first to experience one of the five exclusive and decadent dining areas, all celebrating authentic Indian cuisine set in the beauty of Portuguese and Goan influenced interiors.

Book a table with Tandem over the festive period to experience the delights for yourself. Please call 0116 4784974 or visit www.tandemrestaurant.co.uk to make a reservation.



Now Open

59 Highcross St, Leicester LE1 4PG

Shopping GUIDE

Golden Mile

Leicester's famous Golden Mile is just a 10-15 minute walk from the Clock Tower. Along the Belgrave and Melton Roads, The Golden Mile has one of the largest concentrations of Indian clothes and gold jewellery shops (which give the area its name) in the country.

Laxmi Jewellers are proud to sponsor this year's aerial firework display at the lights switch on and the large fire installation 'The Fireball'.

Be dazzled by the fantastic hue of colours and fashion trends and take a break from your shopping in one of the many restaurants and eateries along the mile. The Golden Mile is also the focus of our Diwali celebrations which attract people from all over the world.

Highcross

The Highcross centre is the heartbeat of the city's shopping scene attracting thousands of shoppers, from high-end retailers from **John Lewis, Jo Malone** and **Reiss** to the popular favourites such as **Topshop, Next** and **Zara**. Be it **Mango, Debenhams, River Island** or **Superdry**



Photo credit: Laxmi Jewellers

there's something for all styles and tastes. Take a break at one of the large number of cafés and restaurants offering everything from spicy Caribbean at **Turtle Bay**, italian chic at **Carluccio's** and fine Indian dining at **Tandem**.

Highcross is easily accessible through its main entrances on High Street, or directly from the 2,000 space multi-storey John Lewis carpark or rooftop parking. W: highcrossleicester.com

Diamond Specialist

LAXMI JEWELLERS LTD

*Happy Diwali
... think Diamonds
... think Laxmi*

Specialists in bridal gold jewellery • Approved insurers and valuers
59 Belgrave Road Leicester LE4 6AS Tel: 0116 261 1177 kandagroup@yahoo.co.uk

Happy Diwali

From Specsavers

Book an eye test at [specsavers.co.uk](https://www.specsavers.co.uk)

Beaumont Leys Tel 0116 2344 800
Blaby Tel 01162 774 148
Hinckley Tel 01455 233 723
Leicester Tel 0116 251 5969
Leicester North Sainsbury's Tel 0116 261 1175
Lutterworth Tel 01455 556 430
Oadby Tel 01162 721 429
Wigston Tel 0116 257 8000



Haymarket

The Haymarket Shopping Centre is situated opposite Highcross and has been a feature of the city centre for more than four decades. You will find great brands such as **TK Maxx**, **H&M**, **Matalan**, **Primark** and the **Body Shop**. Aside from the big names and national chains, the Haymarket is also home to a number of independent shops where you'll find selections to tempt individual tastes.

W: [haymarketshoppingcentre.com](https://www.haymarketshoppingcentre.com)

St Martins

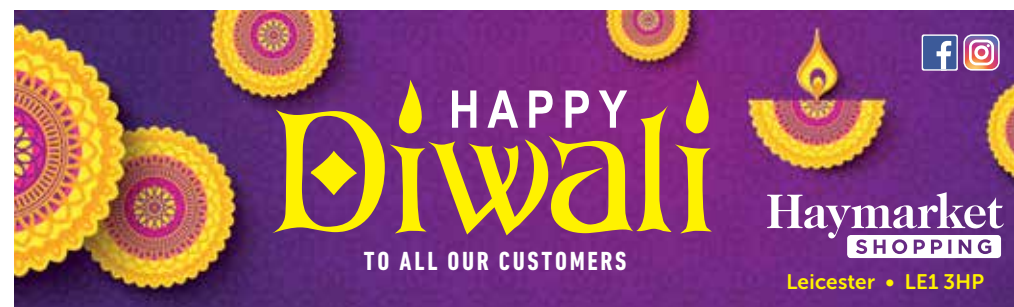
Connected to The Lanes, the area offers a mix of unique shopping, food and drink experiences. **The Vintage Scene** provides clothing from 70s through to 90s, **Harriman & Co** for contemporary design and **Crafty Sew & So** is a fabulous sewing emporium.

St Martins is home to the latest additions to the city's food scene with Indian street food of **Mowgli** and Thai at **Giggling Squid**.

These join the spectacular former bank conversions of **Middletons Steakhouse & Grill**. Cocktail creations at **33 Cank Street**, coffee at **St Martin's Tea and Coffee Merchants**, craft beer at **Tonne**, fine Italian wines at **Veeno** and **Gelato Village**, voted best dessert outlet at the Food Awards England 2016.

The Lanes

The Lanes lead you into Leicester's independent heart with a quaint shopping district offering quirky and unique shops. Contemporary country and rustic interiors at **Pomponette** and jewellery, gifts and wooden toys at **Just...The Fair Trade Shop** or perhaps treat yourself with handmade chocolates at **Cocoa Amore**. The Lanes has plenty to offer. With cafés galore along Loseby Lane spilling out onto its pavements and **The Globe** pub serving fine ales since 1720, it's the perfect place to refresh too!



Silver Arcade, Malcolm Arcade and Odeon Arcade

The city's arcades operate as a network of interconnecting thoroughfares peppered with interesting and unique boutiques and shops. **Silver Arcade** is one of just two four-storey Victorian shopping arcades in the country with unique shops such as **Bryter Moon** and handmade doughnuts from **Doughnott**. Nearby are **Odeon Arcade** and **Malcolm Arcade**. Malcolm Arcade is similar to its Silver relation, and is home to an eclectic mix of shops including a haberdashers and **Rockaboom** record shop.

High Street, Humberstone Gate and Gallowtree Gate

In the High Street area, you can relax and unwind at the **Cosy Club**, refresh in the 15th century **Wygston's House**, dine in the beautifully restored, elegant Victorian city pub **King Richard III** or admire the neo-classical décor of **Café Bruxelles**. Enjoy a wide range of shops include **Jellyrolls** kidswear, **Amabis**, selling unique jewellery and gifts and **Wellgosh** offering premium contemporary clothing.



Gallowtree Gate is home to major high street chains, including **Boots**, **Marks & Spencer**, **Dorothy Perkins** and designer fashions at **Flannels**. Nearby Humberstone Gate includes shops like **New Look** and the popular jewellery store **Pandora**.

Between shopping you can relax at one of many cafés and restaurants, including **Pret A Manger** in Gallowtree Gate, **Mrs Bridge's Tea Rooms** on The Lanes and **Tim Hortons** cafe by the Clock Tower.



Market Street

Explore one of Leicester's historic streets, browse for your new ride at **Future Cycles**, fashions at **Fat Face** and the finest jewellery at Tarratt's including Rolex, Chanel and Longines. Take time out to enjoy fresh and locally sourced produce at **The Detox Shack**, artisan drinks from **200 Degrees Coffee Shop** and walk down to the **Knight & Garter** for a boutique range of beers, wines and spirits.



Leicester Market

With over 700 years of history, **Leicester Market** is celebrated for its fruit and vegetables but there's much more to the largest market of its type in Europe. Here you can also pick up cosmetics, flowers, antiques, books, electronics, DVDs, computer games, clothes, cards, toys and fabrics.

But it's the atmosphere of the bustling and vibrant market place that will reward you the most. Enjoy the new **Market Square** and visit the award-winning **Food Hall** for quality food including fresh seafood, meats and cheeses.

Blue Peter



BAR & GRILL

Enjoy freshly prepared Indian food in a friendly relaxed atmosphere

HAPPY DIWALI



OUTSIDE CATERING AVAILABLE • WEDDINGS • PRIVATE PARTIES • SPECIAL OCCASSIONS

Open 7 days a week • **6pm to Midnight** • 3-5 Law Street • Leicester • LE4 5GR
Mobile: 07745 71 72 93 • Tel: 0116 266 5219 • www.bluepeterspice.co.uk



UNIVERSITY OF LEICESTER

SATURDAY 12 OCTOBER AND SATURDAY 2 NOVEMBER

WISHING YOU A HAPPY DIWALI

Launch yourself at Leicester at one of our open days.



www.le.ac.uk

Helping you travel healthier and smarter



Park and Ride



Adult Cycling Courses



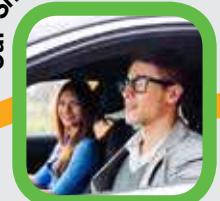
Business support and advice



School initiatives



Car Sharing



Start planning your journey
choosehowyoumove.co.uk



@CHYMLEICS



@ChooseHowYouMove





The Royal British Legion is asking for communities across Britain to **REMEMBER TOGETHER** the service and sacrifice, friendship and collaboration of the men and women of Britain, the Commonwealth and Allied nations who fought together in 1944.



During the Second World War the contribution of over 6 million men and women from across the Commonwealth and Empire were vital to the Allied victory. The pre-partition Indian contribution to this was enormous, with 2.5 million serving across the army, navy and air force, making it the largest volunteer force ever assembled.

To learn more, find us in the Diwali Village located on Cossington Recreation Ground 13th and 27th October, between 3-9pm.

Email: Remembrance@britishlegion.org.uk
Website: rbl.org.uk/Remembrance

Join Together, Come Together, Remember Together

Registered charity number: 219272

Staying IN THE CITY

Whether coming to Leicester for a day, weekend or longer, the city has a range of accommodation and an exciting array of places to enjoy alongside your Diwali experience.

Inhabited for over 2,000 years, Leicester truly is the beating heart of England. Built on the site of two millennia of history, Romans, Saxons, Tudors and Victorians among others have all left their mark, helping to weave the rich historical tapestry of the city.

Now the regenerated city centre is vibrant and thriving with everything from fine art to fine dining, world class theatre to elite sport and experiences from as far afield as the Indian subcontinent and even outer space!

The National Space Centre provides an out-of-this world experience. The striking rocket tower, interactive galleries and the UK's largest planetarium will satisfy even the most imaginative interstellar curiosities.

The 2012 unearthing and identification of the remains of **King Richard III** in a council car park has sparked a revival of interest in



the city's heritage, One of Lonely Planet's Ultimate United Kingdom Travelist, the **King Richard III Visitor Centre** has been created around the poignant place where King Richard III's remains were buried for more than half a millennium only a few paces from where the king's final resting place can be found in **Leicester Cathedral**.

The family favourite **New Walk Museum & Art Gallery** is home to the enormous Rutland dinosaur, Ancient Egyptian Galleries showcasing the most significant collection in the region. The largest collection of German Expressionist artwork in the UK and Picasso Ceramics works from the unique collection of Lord and Lady Attenborough.



Join a tour of **Leicester City Football Club's** home, the King Power Stadium! Enjoy VIP access to areas normally reserved for players, officials and staff. You'll see the media suite, an executive box, home and away changing rooms, the dugout areas and finally walk out of the King Power Stadium tunnel.

Sports fans are spoilt for choice in Leicester; alongside the Fearless Foxes, the formidable **Leicester Tigers** continue from strength to strength as the best supported and most successful club in English rugby. The **Leicester Riders**, Benecos BBL Playoff Final winners and the oldest professional club in British basketball continue their success in the Leicester Arena.

And it's not just the sporting theatres that are grabbing the headlines in this city. The ground-breaking architectural masterpiece **Curve Theatre** provides engaging first-class theatrical experiences from world premieres to its own sell-out Curve productions. Meanwhile **De Montfort Hall**, Leicester's largest entertainment venue, has been serving the city with quality live acts since 1913.

Hotel Accommodation

For those travellers on a budget there's the **Ramada Encore**, conveniently situated near Curve in the Cultural Quarter or if you're looking for a little more luxury, there's the **Mercure Leicester**, **The Grand Hotel** on Granby Street that offers four-star accommodation and a unique food and drink experience at **Marco Pierre White** restaurant.

Sophisticated elegance at **The Villare Hotel**, located in the heart of Leicester by Jubilee Square with luxurious hotel rooms offering a perfect place for rest and recuperation before you resume your city adventure.

St Martins Lodge is in a fully renovated Grade II Listed Georgian building. With many original features have been retained and each room is individually styled in sympathy with the historic architecture and character the new hotel is perfectly located to discover the Richard III experience across from **Leicester Cathedral** and **The King Richard III Visitor Centre**.

Situated on the tree lined New Walk, approximately five minutes' walk from the railway station, is **The Belmont Hotel**. This family owned, town house hotel is a unique retreat in the city centre. With family and luxury rooms, the Belmont is ideal for visitors looking for a warm and personal welcome.

The city also has a number of well-known hotel brands including the **Ibis**, **Premier Inn** and **Travelodge** as well as the **Holiday Inn** which has leisure and spa facilities as well as convenient parking.

Further out of the city centre at junction 21 of the M1 is the 4 star **Marriott Hotel** with excellent dining and leisure facilities on site and the Hilton which offers a good range of family rooms as well as leisure facilities.



PROUDLY SUPPORTED BY



New Lubbethorpe, Beggars Lane, LE3 3NQ



City Heights, Somerset Avenue, LE4 0JY



Wigston Meadows, Newton Lane, LE18 3SH



Beautiful new homes for you and your family are available now at City Heights, New Lubbethorpe and Wigston Meadows. A collection of two to six bedroom apartments and houses just a few miles from the City Centre, built to last and protected with a 10 year NHBC warranty.

- Just a 5% deposit with Help to Buy
- 20% equity loan means just 75% mortgage
- Equity loan interest-free for 5 years
- Available to first-time buyers and existing homeowners
- We've been recommended by over 90% of our homeowners for 10 years in a row*
- Unmissable offers now available^

for more, visit
barratthomes.co.uk

or call 0333 355 8472

*Selected plots only, terms and conditions apply. See website for details, subject to contract and status. Prices correct at time of publishing if mentioned. Images include optional upgrades at additional cost. Barratt Homes is a trading name of BDW Trading Limited (number 03018173), whose registered office is at Barratt House, Cartwright Way, Forest Business Park, Bardonia Hill, Coalville, Leicestershire LE67 1UF ("BDW") and BDW is a subsidiary of Barratt Developments PLC. Homes England ("HE") provides an equity loan for 20% of the purchase price of the property in England. The equity loan provided by the HE is secured as second charge on your property. The amount you have to repay to the HE may be more than the amount of the equity loan provided. ^Based on HBF star rating scheme from 2010 to 2019 derived from the NHBC national new homes survey at eight weeks (<https://www.hbf.co.uk/policy/policy-and-wider-work-program/customer-satisfaction-survey/#tab-downloads>) over 90% of Barratt Developments PLC group customers would recommend our brands to a friend. Barratt Development brands include Barratt London, Barratt Homes and David Wilson. Calls to 03 numbers are charged at the same rate as dialling a 01 or 02 number. If your fixed line or mobile service has inclusive minutes to 01/02 numbers, then calls to 03 are counted as part of this inclusive call volume. Non-BT customers and mobile phone users should contact their service providers for information about the cost of calls.

Travel INTO LEICESTER

Park & Ride

Back by popular demand, the Diwali Park & Ride service will be operating for both the Switch On and Diwali Day. This will run from the Birstall Park & Ride site, located at LE4 4NN, and Abbey Park Road to enable visitors to attend the event without having to find a parking space.

For Diwali Lights Switch On, Sunday 13 October and Diwali Day, Sunday 27 October services will run from Birstall Park & Ride site to Abbey Park Road from 4pm until 8pm. Return journeys will run from Abbey Park Road starting at 8.30pm, and the last bus will leave at 10pm.

The cost will be £4 per person for a return journey or £6 for a group of up to five people travelling in a car together. The cost for concessionary pass holders is £1 for a return journey. Park & Ride Season Tickets will not be valid.

Choose how you move

For the most up to date information on public transport, walking and cycling routes and car shares, please visit choosehowyoumove.co.uk
Temporary bike park on site.

Car parking

Car parking spaces in and around the area will be limited during the event; therefore visitors are positively encouraged to use public transport to travel to and from the city centre. There will be limited spaces available for blue badge holders on a first come first served basis in the B&M car park access from Belgrave Circle.

A 24-hour NCP car park is situated in Abbey Street, which is approximately a three minute walk from bus stops and approximately a 15 minute walk from the event. 24-hour parking is also available at the Haymarket Centre, and also at Lee Circle, which are approximately a 15 minute walk from the event.

There are other car parks a little further out from the ones mentioned, These are Phoenix Square, Upper Brown Street Car Park, Dover Street and Newarke Street.

For more information about travelling by bus, contact Traveline 0871 200 2233 or traveline.info. For National Rail enquiries, telephone 08457 484 950. Further information about travelling to Leicester is at visitleicester.info

Wherever you are



Bus services

The bus services below are those that will travel, or have stops near to, Belgrave Road. Bus services will continue to operate normally on Abbey Park Road and Belgrave Gate to facilitate attendance at the events.

2	(Kinchbus)	Loughborough	Departs St Margaret's Bus Station	Stand SF
5	(Arriva)	East Goscote	Departs Haymarket Bus Station	Stand HQ
6	(Arriva)	Syston	Departs Haymarket Bus Station	Stand HP
22	(First)	Rushey Mead	Departs Haymarket Bus Station	Stand HR
25	(First)	Beaumont Leys	Departs Haymarket Bus Station	Stand HT
26	(First)	Beaumont Leys	Departs Haymarket Bus Station	Stand HV
54	(First)	Beaumont Leys	Departs Haymarket Bus Station	Stand HY
126/7	(Arriva)	Shepshed/Loughborough	Departs St Margaret's Bus Station	Stand SH

Bus Diversions

When Belgrave Road is closed to traffic bus services will divert as follows:

Services to **22** to Rushey Mead, **6** to Thurmaston and **5, 5A** to Melton will use Marfitt Street and Catherine Street. Services to **25/6** and **54** to Beaumont Leys/Mowmacre Hill and **2 & 126/7** to Loughborough will use Abbey Lane.

The nearest point that buses will be able to access Belgrave Road are Belgrave Roundabout and Melton Road at Marfitt Street.

Road CLOSURES

Diwali Lights Switch On and Diwali Day Sunday 13 October and Sunday 27 October

On Sunday 13 October, the following will happen:

Phase 1

Belgrave Road will be partially closed between Belgrave Circle and Garfield Street from 10am to enable the stage to be set up. Vehicles will still be able to access the rest of Belgrave Road from the Melton Road/Loughborough Road end until 5pm. Please be aware this will cause delays for vehicles getting into and exiting the area.

Phase 2

A full closure of Belgrave Road and the junctions with its side roads will be in place from 5pm until approximately 9.30pm, during which time vehicles will not have any access.

On Sunday 27 October, the following will happen:

A full closure of Belgrave Road and the junctions with its side roads will be in place from 5pm until approximately 9.30pm, during which time vehicles will not have any access.

Please note that on both dates the Emergency Services and Leicester City Council will need to maintain two clear routes through the Belgrave area for emergency vehicles. The routes are: Loughborough Road, Holden Street, Ross Walk, MacDonald Road, Hildyard Road, Marjorie Street, Abbey Park Street, Harrison Road, Surrey Street, Doncaster Road, Cossington Street, Rothley Street, Rendell Road and Portsmouth Road.

Any vehicles parked on these roads, which will be marked on both sides with 'No Waiting' cones, between 6am and 10pm on Sunday 13 October and Sunday 27 October will be ticketed and towed away. Doncaster Road will have the existing one-way order suspended for both Diwali events.

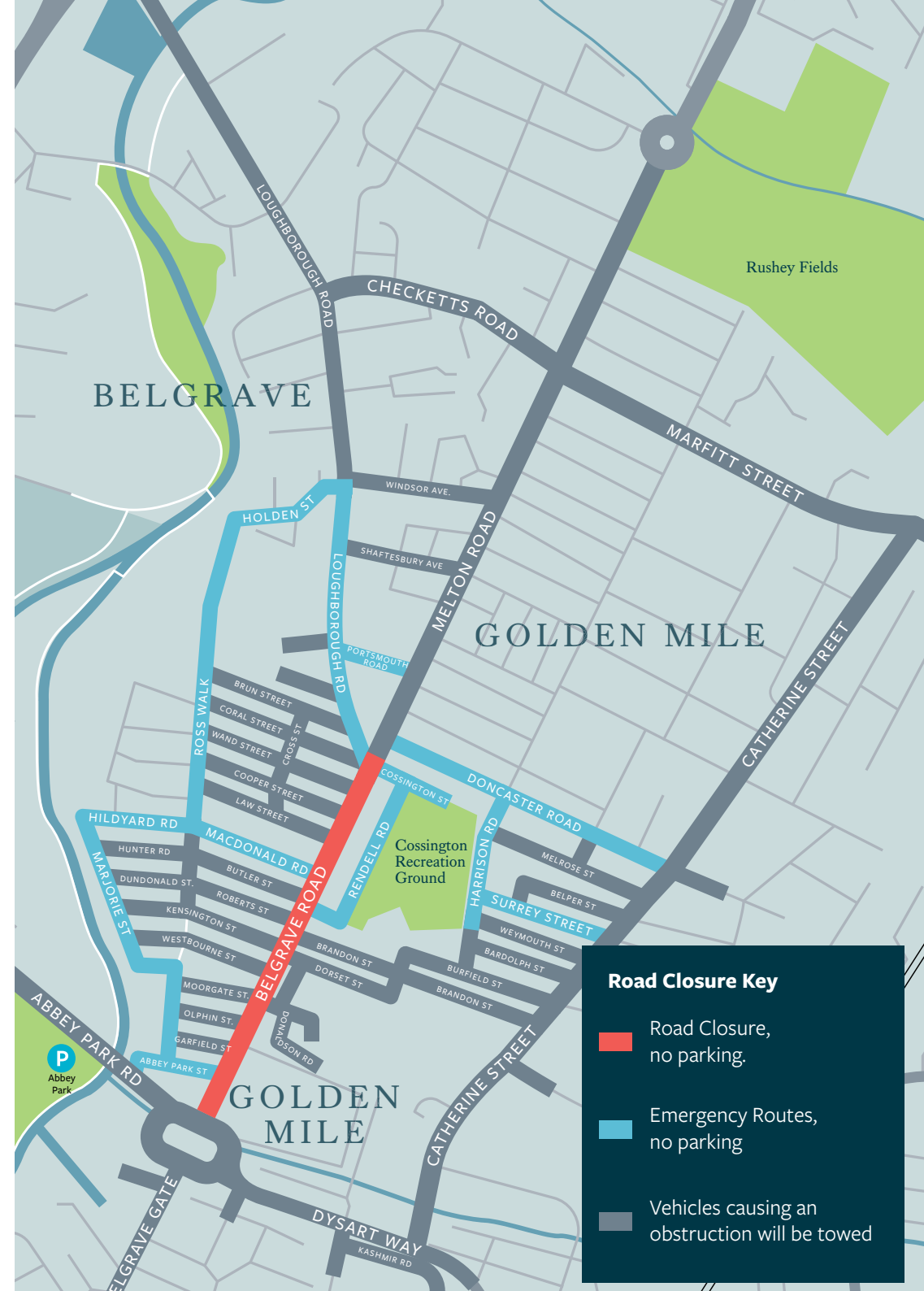
In addition, any vehicle causing an obstruction on any road in the Belgrave Area will also be ticketed and towed away. Any vehicle parked in contravention of a parking restriction, temporary parking restriction, causing obstruction or dangerously parked will be issued with a Penalty Charge Notice and will be towed away to a secure compound.

You will also incur costs for the vehicle being towed to the recovery company. It is important that you adhere to signs, lines and cones in place for this event to avoid any penalties.

Health and safety

In the interests of public safety, members of the public are asked not to bring fireworks to the celebrations. The use of fireworks in a public area will not be tolerated and will be reported to the police.

Leicestershire Police and **Leicestershire Fire & Rescue Services** will have mobile awareness units at this year's events, highlighting the importance of safety during the festive period. The units will be at the Diwali Village on Cossington Street Recreation Ground for the public to pop along to. We would like to thank Leicestershire Fire & Rescue Service and Leicestershire Police for their continued support of the Diwali celebrations. For further information visit: [celebratesafely.com](https://www.leicestershire.gov.uk/celebratesafely.com)



Road Closure Key

- Road Closure, no parking.
- Emergency Routes, no parking
- Vehicles causing an obstruction will be towed



Christmas
in Leicester

Jubilee Square Ice Rink



GET YOUR
SKATES ON

Enjoy a magical month on real ice
5 December – 5 January 2020

BUY TICKETS NOW AT
christmasinleicester.co.uk

Leicester
visitleicester.info

 [visitleicester](https://www.facebook.com/visitleicester)  [@visit_leicester](https://twitter.com/visit_leicester)



Leicester
City Council



Birmingham to Delhi

Experience Diwali together

Celebrate the new beginnings of Diwali with your loved ones by flying direct from Birmingham Airport to Amritsar and Delhi with Air India, or take a connecting flight with Air France, Emirates, KLM, Lufthansa, Qatar Airways, and Turkish Airlines. So whether you're visiting family for the festival of lights or if family are visiting you, make your connection with Birmingham Airport.

birminghamairport.co.uk



Here for your journey



OYSTER PERPETUAL SUBMARINER DATE



STRATFORD-ON-AVON 01789 267 072 | MAYFAIR 020 7409 2845 | LEICESTERSHIRE 0116 255 4434



THE QUEEN'S AWARDS FOR ENTERPRISE

WATCH FEATURED SUBJECT TO STOCK AVAILABILITY